

# KINSEY *Today*

A PUBLICATION OF THE KINSEY INSTITUTE FOR RESEARCH IN SEX, GENDER, AND REPRODUCTION

---

Vol. 15 No. 2

Spring 2011

## TABLE OF CONTENTS

### **2011 Juried Art Show Opens at SoFA Gallery**

Visit the show in person, or view the wonderful new artwork online.

### **Staff News**

Introducing the Associate Director of Development and the new Accounting Associate; Janssen promoted; and an award for receptionist, Pat Lacy.

### **Storytellers in the Kinsey Institute Gallery**

Gallery exhibit features wide variety of story-driven art from the library.

### **Update on Collections Digitization Project**

See what we've accomplished and where we're heading.

### **Beyond Our Walls**

Selections from Kinsey Collections featured in museums and galleries.

### **Research Update**

Updates from the field, and new publications.



**Open (2010); Alison Oakes; oil on porcelain.**

The 2011 Juried Art Show features 100 works of art in a variety of media, chosen from over 700 entries submitted by artists from around the world.

The mission of The Kinsey Institute is to promote interdisciplinary research and scholarship in the fields of human sexuality, gender, and reproduction. The Institute was founded in 1947 by renowned sex researcher Alfred Kinsey. Today, the Institute has two components, an Indiana University research institute and a not-for-profit corporation, which owns and manages the Institute's research data and archives, collections, and databases.

## 6<sup>th</sup> Annual Juried Art Show Opens May 20th

The 6th Annual Kinsey Institute Juried Art Show opens on Friday, May 20th, with a reception from 6:00 to 8:00 pm, in the [School of Fine Arts Gallery](#).

This year's jurors for the show are Betsy Stirratt, Director of School of Fine Arts Gallery at Indiana University; Garry Milius, Associate Curator at The Kinsey Institute; and Christopher Bedford, Chief Curator of the Wexner Center for the Arts at The Ohio State University.

A cash prize of \$300 will be awarded to the artist whose work is voted "Best in Show". Similarly, a \$200 prize will be awarded to the work voted "Gallery Visitors' Choice" the night of the opening reception, May 20th.



You can find more information about the Juried Art Show on [the exhibit website](#), including a virtual gallery of the artworks selected by the jurors, and links to past years of the show. There is also additional hotel information available for visitors coming to Bloomington for the reception.

In conjunction with the opening of the Juried Art Show, The Kinsey Institute will be having an Open House on Saturday, May 21 from 11:00 am to 2:00 pm. Visitors will be able to view the "Storytellers" exhibition in the Kinsey Institute Gallery. The Kinsey Institute is located in Morrison Hall on the Indiana University Campus.

.....

## Interested in Volunteering for Research?

Become a fan of our newest Facebook Page – Kinsey Institute Research. Our research staff will be posting current and upcoming opportunities to participate in our research studies. See what interests you and find out if you qualify to participate: [www.Facebook.com/pages/Kinsey-Institute-Research/119128441483963](http://www.Facebook.com/pages/Kinsey-Institute-Research/119128441483963).

You can also find current opportunities to participate in research on our website at [www.KinseyInstitute.org/research/surveylinks.html](http://www.KinseyInstitute.org/research/surveylinks.html).

## Staff Note-ables



### Welcome Andrew Bratton, Associate Director of Development

Andrew "Drew" Bratton joined The Kinsey Institute in January to lead our development efforts. Before coming to the institute, Drew was the Executive Director of the USA International Harp Competition (USAIHC). He has worked with numerous non-profit arts organizations in Indiana and Illinois, planning, producing and marketing shows and events.

Drew has a master's in Arts Administration from Indiana University, and performed and produced theater in Chicago.

"I'm excited about the opportunity to bring the mission of The Kinsey Institute to a wider audience. The Institute is a place where art and science come together, and I enjoy communicating that message to people."

Drew's predecessor in the position, Patty Winterton, is now a Development Officer at the Indiana University Foundation, where she continues to assist in philanthropic activities to benefit The Kinsey Institute. Drop Drew an [email](#) or give him a call at 812-855-7686. He is open and ready to talk!

### Pat Lacy was honored this month by the Bloomington Convention & Visitors Bureau as "Front Line Employee of the Year"

Anyone with any interest in visiting The Kinsey Institute first comes in contact with Pat Lacy. Whether first year students at Indiana University, a class from Ohio, visiting scholars, or interested individuals passing through town, Pat makes people feel comfortable.

At right: Julie Warren of the Bloomington CVB with Pat Lacy and her award.

In her down-to-earth style, she welcomes everyone, and answers all their questions and concerns with knowledge, honesty and respect. Many people go out of their way to drive into town to see the collections, combining a trip to the Midwest with the opportunity to visit the famous 'sex institute.' Pat's engaging personality and her knowledge about both The Kinsey Institute and our community resources are the number one reason that those who inquire actually do come in for a tour or a visit, and that, year after year, we have so many returning visitors. We are proud to have her, in every sense of the word, at our 'front desk.'



## **Matt Saba moves to Defense Department; Shelby Cowley steps in as accounting associate**

Congratulations to Matt Saba, who graduated this month from the Kelley School of Business at IU with an MS in accounting. He will be testing his skills at the Department of Defense - they're lucky to have him! Shelby Cowley will be taking over the business role, as she works on her business degree. Welcome, Shelby!

At right: Shelby and Matt in the office.



## **Dr. Erick Janssen Becomes 'Senior'**



Researcher [Dr. Erick Janssen](#) was recently promoted to Senior Research Scientist at Indiana University.

He serves as Director of Research and Graduate Training, and is adjunct associate professor in the Department of Psychological and Brain Sciences and Cognitive Science.

Congratulations, Erick!

Photo of Erick Janssen by Herbert Ascherman, Jr.

.....

## *Storytellers* Opens in Kinsey Institute Gallery

*Storytellers* provides a rare opportunity for gallery visitors to view a wide range of material pulled from The Kinsey Institute’s extensive library collection, with an intriguing selection of pulp fiction paperbacks from the 1960s, illustrated erotic novels, underground comic books, Japanese pillow books, and other narrative texts.

At right: Book cover, *Jet Set Switch* published 1966.

Story-driven artworks are also included in the exhibition, ranging from vintage photographs, prints, watercolors, and drawings by anonymous and known artists to a series of Judy Chicago lithographs and other contemporary pieces.

*Storytellers* appears in the Kinsey Institute Gallery April 8 - July 15, 2011.

The Kinsey Institute Gallery is open 1:30 pm to 5:00 pm weekdays or by appointment. Admission is free. **Due to adult content, visitors should be 18 years of age or older, unless accompanied by a parent or guardian.**



.....

## Making It Happen: Digitization Project Update

In 2009, Kinsey Library staff began work on a large preservation and digitization project to protect the archival and art collections, and to make them available and accessible to scholars, students and the public. Over the past few years, generous donations from [Michael Sherrod](#), chair of the [Kinsey Institute board of governors](#) and David Henry Jacobs, Jr., an entrepreneur with close family ties to Indiana University, The Ford Foundation, and the [Hugh Hefner Foundation](#) have propelled our efforts in this long-term project.

A key goal of the digitization project is to make materials from the collection more widely available in a variety of formats. As you browse through the lists of projects and imagine the possibilities for preservation, restoration and world-wide access, we hope you will be inspired to add your own contribution to the Kinsey digitization project.

**At right:** Wilhelm von Gloeden, *Male nude*, Taormina, Sicily, c.1900. Photograph, KI-VG: 90. From a collection of more than 250 photographs, now digitized.



## Kinsey Era Correspondence

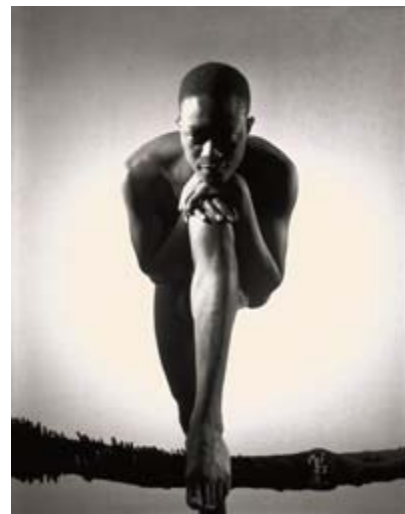
The Kinsey Era Correspondence (65,000 pieces) is a rich resource of information that documents how the Institute for Sex Research evolved through Dr. Alfred C. Kinsey's written interaction with individuals. Over 8,000 individuals and organizations wrote letters to Dr. Kinsey between the years of 1939 and late 1950s, discussing their personal problems as well as professional concerns.

## The Alfred C. Kinsey Collection and Interview Sheets

The collect represents Kinsey's tenure at IU from his arrival in 1920 to 1947 when The Kinsey Institute was established. It includes course materials on entomology and zoology, and human sexuality.

The Interview Sheets includes demographic and sexual history data of more than 18,000 individuals interviewed by Kinsey and his team. While most of the data have been coded and digitally stored, these original pieces remain as unique artifacts.

**At right:** George Platt Lynes, *Feral Benga*, c.1934. Photograph, KI-GPL-N592. More than 2300 negatives from the George Platt Lynes collection have been digitized. Copyright © Estate of George Platt Lynes.



## Individual Archival Collections

Among the unique archives are works of [Harry Benjamin](#) (35,000 pieces), one of the most prominent sex researchers of the 20th century, who developed standards of care for transsexuals. Other collections include the personal works of [Thomas Painter](#), a gay activist and writer.

**At right, from Magnus Hirschfeld Collection:** Hirschfeld (1868-1935), German physician and sex researcher, is a pioneer sex researcher. His collection consists of invitations to professional events and to lectures signed by Hirschfeld, publications and publication announcements, reports, clippings, handbills and posters for lectures on homosexuality and other topics.

## Published Works by Sex Researchers

The Kinsey Institute holds [books and items](#) from Krafft-Ebing, Sigmund Freud, Magnus Hirschfeld, Wilhelm Reich, Robert Latou Dickinson, Harry Benjamin, Masters and Johnson, John Money, Vern Bullough, and many others whose works were published before 1923.

## Rare Books and Magazines

This collection includes rare English, French, Japanese and Chinese Erotica, and the Historical Magazine Collection (nudist, fetishist, SM magazines). Other publications are books of the 17th and 18th century concerning sexual beliefs and customs of different cultures and languages.

**At right:** A cover from Photo Bits, a London publication of late 19th century, focusing on women and society. Photo Bits ceased publication in the early 20th century. The Kinsey Institute has one of the most complete holdings of this title.

## Film Collection

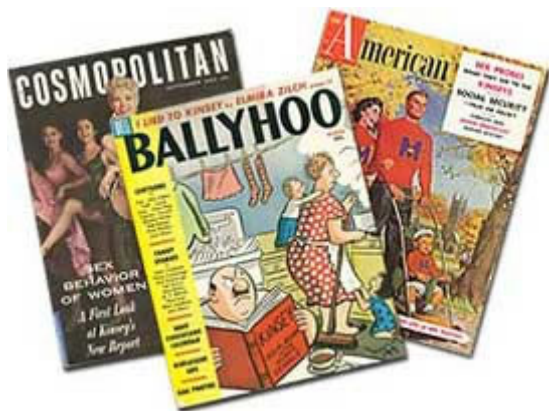
Along with the [unique American stag films](#) from the 1920s to the 1960s, the Kinsey film collection (14,000 films and videos) includes sex education and other high school age guidance films made by production companies such as *Churchill Films*, *Alfred Higgins Production* and *Perennial Education*, from 1960s-1980s. Other unique collections include *Animal Sex Behavior* from 1940s and 50s, and *Swedish Erotica*, 8mm and super 8 short commercially produced films for the home collector, from such distributors as *Danish Films International*, *Burning Films*, *Diamond Collection* and more. [SexSmart Films](#) has partnered with the institute on several projects to offer a new venue for films and video from the Kinsey Collections.



## Making It Happen: Digitization Project Update (continued)

### Completed Digitized Collections

In 2006, the library completed the first digitization collection - the [Kinsey Era Print Media Response](#), with over 25,000 original clippings from journals, newspapers, and magazines dating from 1947 through the 1980s. They include academic articles, book reviews, editorials, letters, advertisements, cartoons, and obituaries of Dr. Kinsey's death. The Ford Foundation provided funding for this project.



Also, in 2009, a selection of 1,700 special art objects, photographs, paintings and drawings, and artifacts were scanned using high-definition techniques.

If you would like to help in creating a safe, state-of-the-art home for these extraordinary collections, please consider adding your name to this effort. Contact [Drew Bratton](mailto:acbratto@indiana.edu) for more information at [acbratto@indiana.edu](mailto:acbratto@indiana.edu) or give him a call at 812-855-7686.

.....

### Selected New Publications

Cerny, J., & Janssen, E. (2011). Patterns of sexual arousal in homosexual, bisexual, and heterosexual men. *Archives of Sexual Behavior*, doi:10.1007/s10508-011-9746-0.

George, W.H., Davis, K.C., Heiman, J.R., Norris, J., Stoner, S.A., Schacht, R.L., Hendershot, C.S., and Kajumulo, K.F. (2011). Women's sexual arousal: Effects of high alcohol dosages and self-control instructions. *Hormones and Behavior*, doi:10.1016/j.yhbeh.2011.03.006.

Janssen, E. (2011). Sexual arousal in men: A review and conceptual analysis. *Hormones and Behavior*, doi:10.1016/j.yhbeh.2011.03.004.

Macapagal, K.R., Rupp, H.A., & Heiman, J.R. (2011). Influences of observer sex, facial masculinity, and gender role identification on first impressions of men's faces. *Journal of Social, Evolutionary, and Cultural Psychology*, 5(1), 92-105.





## Beyond Our Walls: Kinsey Collections on Tour

The Kinsey Institute is pleased to allow galleries and art museums the opportunity to show pieces from the Kinsey Collections which complement their holdings and complete their exhibit. The following art exhibitions currently on display feature one or more pieces from the Kinsey Collections.

### *Andrey Avinoff: In Pursuit of Beauty*

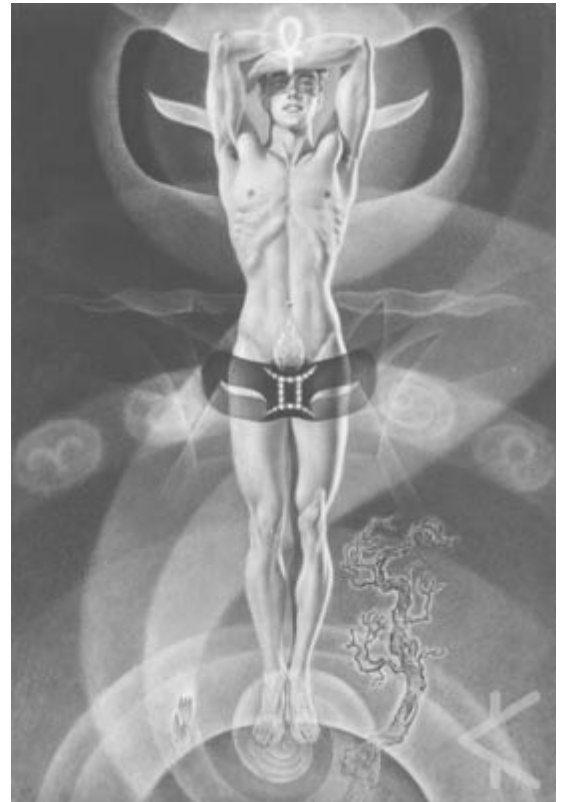
Carnegie Museum of Art, Pittsburgh

February 26 – June 5, 2011

Visit the exhibit website at <http://web.cmoa.org>

Carnegie Museum of Art presents the first exhibition in more than 50 years devoted to the visionary art of the brilliant and talented Andrey Avinoff (1884–1949), who believed that beauty will save the world. His exotic story, from the court of the Russian tsar to the mountains of Tibet, from an upstate New York dairy farm to the laboratories of Pittsburgh and the salons of Park Avenue, has never been told in full. Best known for his scientific research on butterflies, Avinoff created a rich body of weird, fantastical, symbolist watercolor paintings that express ideas about metamorphosis, transience, and change.

The exhibit includes 8 artworks by Andrey Avinoff from the Kinsey Institute art collection. The exhibit catalog *Andrey Avinoff: In Pursuit of Beauty* is available in the [Carnegie Museum store](#), and includes some of images from the Kinsey Institute art collection.



Above: *Atlantis 1*, 1944; Andrey Avinoff; Offset lithograph

### *Exposed: Voyeurism, Surveillance and the Camera*

Walker Art Center, Minneapolis

May 21 – September 18, 2011

Visit the exhibit website at <http://calendar.walkerart.org/>

*Exposed* offers a fascinating look at pictures made on the sly, without the explicit permission of the people depicted. With photographs from the late nineteenth century to present day, the pictures present a shocking, illuminating and witty perspective on iconic and taboo subjects.

The exhibit features one photograph from the Kinsey Documentary Collection. The exhibit was previously on display at [The Tate Museum](#), London, UK from May 28 - October 3, 2010, and at the [San Francisco Museum of Art](#) from October 30, 2010 - April 17, 2011.

## Beyond Our Walls: Kinsey Collections on Tour (continued)

### *Out in Chicago*

Chicago History Museum, Chicago

May 21, 2011

Visit the exhibit website at <http://chicagohistory.org/planavisit/exhibitions/out-in-chicago>

Discover 150 years of urban history through the lens of gender, sexuality, and nonconformity. This exhibition uses four themes—individuals and their bodies, family and home, communities, and political action—to present the city’s diverse LGBT (lesbian, gay, bisexual, and transgender) history. *Out in Chicago* is part of a continuing series about the city’s communities.

Items from the Kinsey Collection appearing in *Out in Chicago* include an Alfred Kinsey letter written on Chicago hotel stationery, an original drawing by Samuel Steward, and two of Steward’s cards for his Chicago tattoo business.

### *Manmade*

Pictura Gallery

Jun 3 - July 30, 2011

Bloomington, IN

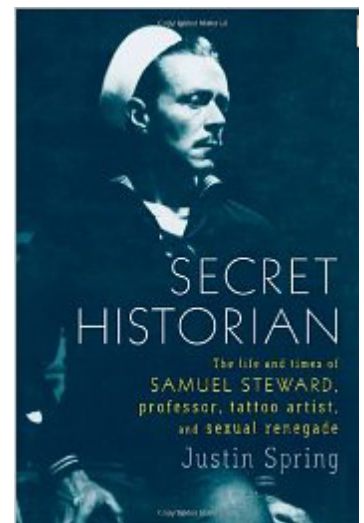
Visit the gallery website at <http://www.picturagallery.com/>

The exhibit includes prints from the Kinsey Collections.

### *The Secret Historian*

The Museum of Sex in New York is planning an exhibit on *The Secret Historian*, the recently published biography of Samuel Steward by author Justin Spring. Items from the Kinsey Collection appearing in the exhibit will include photographs and a watercolor album, as well as correspondence between Alfred Kinsey and Samuel Steward.

The exhibit is scheduled to open in July, 2011. You may look for updated information on the Museum of Sex website at <http://museumofsex.com/>



## Spring 2011 Research Update

### Womens' reproductive cycle through the lifespan — a bio-anthropological perspective



Photo Credit: Jennifer Burch

From infertility to hormone replacement therapy, major medical and research centers are focusing on women's reproductive issues and trying out new solutions. Research on causes and treatments are almost exclusively based on data from women in industrialized countries.

But there are other stories coming out of the Bolivian highlands, where women and men are under environmental stress due to seasonal variation in workload and food intake. For nearly 20 years, as Director of *Project REPA* (Reproduction and Ecology in Provincia Aroma), Virginia Vitzthum has been following the reproductive health of women in the Bolivian highlands pregnancy,

pregnancy loss, childbirth, and now, menopause (see *Kinsey Today*). This research illuminates the roles of environmental, behavioral, dietary, and genetic factors in women's reproductive health.

In April, Dr. Vitzthum and her colleagues, including IU student research assistant Jennifer Burch, presented some recent findings from the *REPA* project at the Annual Meeting of the Human Biology Association in Minneapolis MN.

- **The timing of menopause in a population with high mortality risks.**

Age at menopause is predicted to be relatively earlier in populations characterized by high adult mortality risk, especially if maternal survival is a major determinant of newborn survival. Such conditions are common in many non-industrialized populations including in the Bolivian *altiplano*, the locale for Project REPA, a longitudinal study of reproductive functioning and health in rural Bolivians.

In preliminary analyses, the median age of menopause among these women was 48 years, at the lower end of the range of reported ages at menopause in other populations (e.g., Nepal = 46.8 yrs, US whites = 51.4 yrs). Those Bolivian women with a younger age at menarche (first menstrual cycle) were found to have a younger age at menopause (menarche at 12 years of age was associated with age at menopause of 46 years; menarche at 16 years of age was associated with an age of menopause of 50 years). Higher socioeconomic status was also associated with an earlier age at menopause. The research team is currently examining the potential influence of other factors, including nutritional status and lifetime fertility, on the timing of menopause in these rural Bolivians.

## Spring 2011 Research Update (continued)

Presented by Jennifer Burch, Jonathan Thornburg (IU, Astronomy), and Virginia Vitzthum, and funded by the Office of the Vice Provost for Research, Indiana University, Bloomington.

- **Investigating trade-offs between lactation and maternal somatic investment in breastfeeding rural Bolivian women.** (with Amanda Rollins, Indiana University Dept of , Hilde Spielvogel, Bolivian Institute of High Altitude biology, and Jonathan Thornburg, IU Astronomy)

Breastfeeding provides the best nutritional resource for a young infant and also confers invaluable immunological benefits, but breastfeeding is metabolically 'expensive.' This energy demand can be met by drawing on maternal fat stores and/or changing maternal food intake and activities during lactation, options that may not be feasible if food is scarce and/or maternal labor is essential. This ongoing study is evaluating height, weight and other post-partum changes of breastfeeding women in the Bolivian *REPA* study.

Funded by National Science Foundation (SBR 9506107), University of California Regents, and Indiana University, Bloomington.



Photo Credit: Jennifer Burch

- The researchers also issued a **technical report, showing that the relationship of salivary to serum progesterone in Bolivian women is comparable to that in other populations.**

Because refrigeration and medical equipment are not always optimal, and samples have to be transported to laboratories in the US and Europe for testing, sampling hormones in the field can be tricky business. Furthermore, collecting blood samples for measuring hormones may be invasive.

Salivary progesterone (P) concentration is widely used in field studies as a relatively easy-to-measure proxy for serum Progesterone. In this study, the team analyzed new data collected specifically to investigate the relationship of salivary P to serum P in Bolivian women and concluded that **salivary P is a reliable proxy for serum P in Bolivian women** and (assuming comparable assays) that comparisons of salivary P are valid across populations.

Presented by Jonathan Thornberg, Jennifer Burch, Virginia Vitzthum, and Rose Stewart (CISAB Lab) of Indiana University, and Diva Bellido, Hilde Spielvogel, and Lourdes Echalar from the Bolivian Institute of High Altitude Biology.

Funded by Instituto Boliviano de Biología de Altura, La Paz, Bolivia; Indiana University, Bloomington; Kinsey Institute for Research in Sex, Gender, and Reproduction; and the Center for the Integrative Study of Animal Behavior at Indiana University.

---

*Published by*

**THE KINSEY INSTITUTE**

for Research in Sex, Gender, and Reproduction™

***Advancing sexual health and knowledge worldwide.***

Indiana University | Morrison Hall 313 | 1165 East Third Street | Bloomington, IN 47405 USA  
812.855.7686 | FAX 812.855.8277 | [www.kinseyinstitute.org](http://www.kinseyinstitute.org)

*The ideas and opinions expressed by authors of articles published in KINSEY TODAY are wholly their own, and do not necessarily represent those of The Kinsey Institute.*

Copyright © 2010 The Kinsey Institute